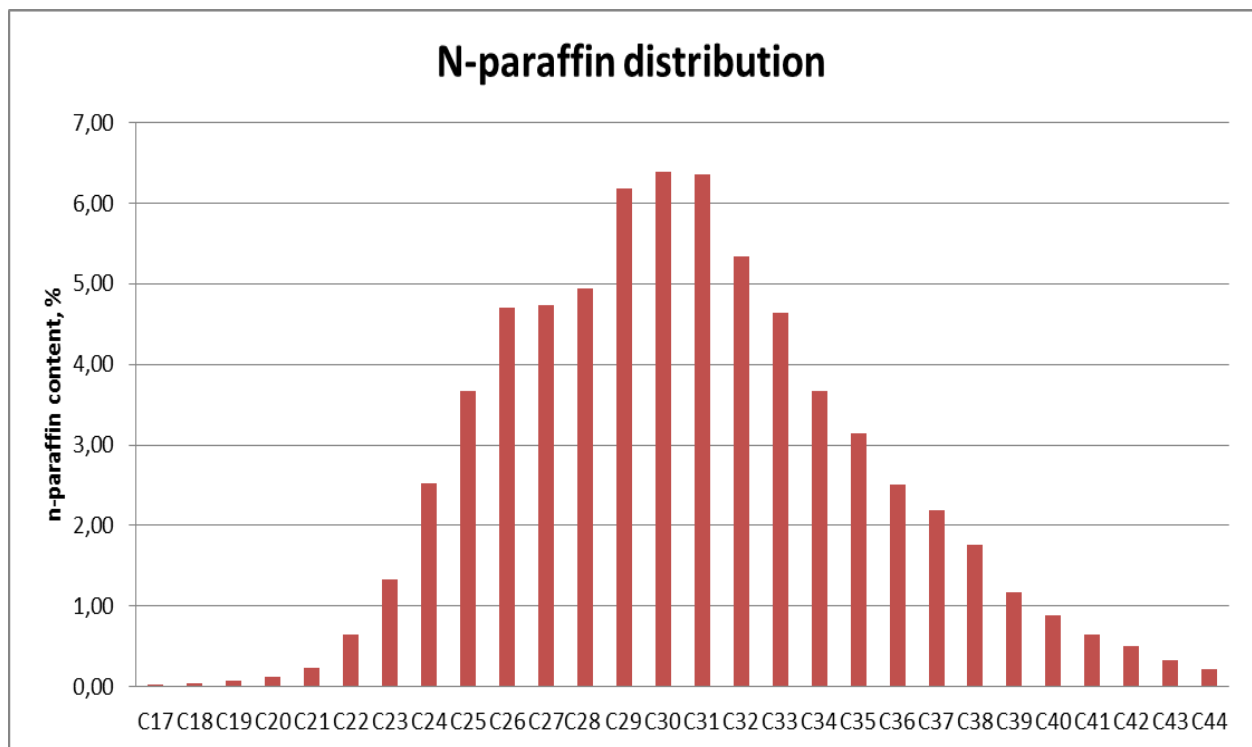


ORLEWAX 640

ORLEWAX 640 is a wax formed as a result of composing paraffin waxes. Added to the rubber mixture ORLEWAX 640 migrates from inside to external surface of rubber products. ORLEWAX 640 forms a protective film on the rubber surface. It increases the durability of the rubber and also gives a gloss effect.

Properties

Parameter	Requirements	Test Method
Congealing point, °C	59-65	PN ISO 2207
Ash content, %, max.	0,1	ASTM D 721-17
Oil content, %, max.	1,0	ASTM D 721-17
Kinematic viscosity in 100°C, mm ² /s	5,8-6,5	PN-EN ISO 3104



ORLEN Południe S.A.

Sales Office

ul. Fabryczna 22

32-540 Trzebinia

tel. +48 24 201 02 72

magdalena.kozinska@orlen.pl

www.orlenpoludnie.pl

Disclaimer: The information contained in this document is based on Orlen Południe knowledge and experience at the time of its creation. We reserve the right to make any changes to this document or the products described therein, as a result of technological progress or developments. This information implies no liability or other legal responsibility on our part, including with regard to existing third party patent rights. In particular, no guarantee or warranty of properties in the legal sense is implied. The customer is not exempted from the obligation to conduct careful inspection and testing of incoming goods. Reference to trademarks used by other companies is neither a recommendation, nor should it give the impression that products of other companies cannot be used. All our business transactions are governed exclusively by our General Business Conditions.

ORLEN Południe Spółka Akcyjna, a Polish company, with its registered office at Fabryczna 22, 32-540 Trzebinia, Poland entered in the National Court Register kept by the District Court, XII Commercial Division in Cracow under number: 0000125856 VAT UE No: PL 6280000977, the share capital / paid-up capital: 49 796 880 PLN